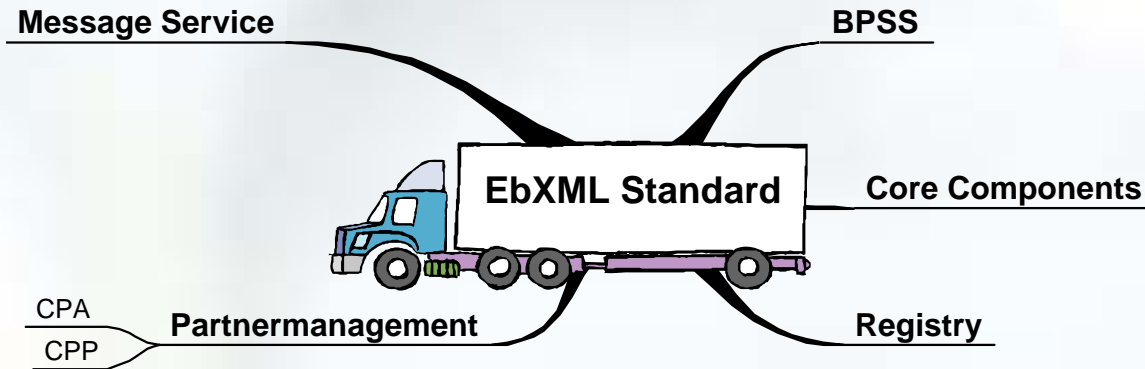


# Agenda

Short summary of T-Mobile's B2B Hub

- ebXML – What is it
- Delivery Process

# ebXML - What is it?



Everything is based on existing standards; HTTP, TCP/IP, MIME, SMTP, SOAP, XML

## ebXML Mission:

- To provide an open XML-based infrastructure enabling the global use of electronic business information in an interoperable, secure and consistent manner by all parties.
- Enable more open, flexible, widely implementable business transactions.
- Specifications that utilize a set of modular standards

### Standardized by:

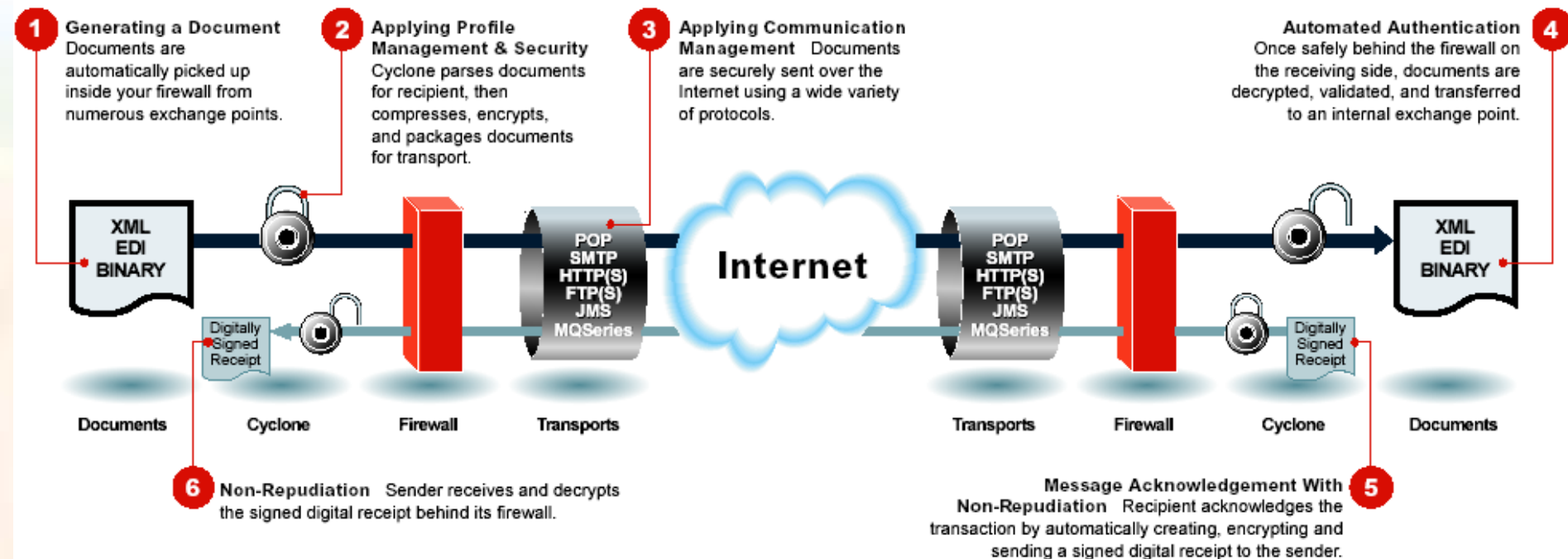
- UN/CEFACT
- OASIS
- ISO 15000



[www.ebxml.org](http://www.ebxml.org)

... T · Mobile ·

# Typical Non Repudiated Flow



# Secure Transactions Over the Internet

## ebXML- Standard

- Interoperable
  - ebMS 2.0 and Support for CPA 2.0
  - ebXML Reg/Rep support
  - Ebusinessready interoperability certified
- Data Transport
  - SMTP/POP3
  - HTTP(S): SSL 2.0, 3.0, TLS 1.0 (client authenticated)
- Data types
  - XML, Text, Binary flat files (text, graphics, IDOCs)
- Confidentiality
  - Payload encryption : RC2, RC4, DES, 3DES, AES
- Data Integrity and Non-repudiation
  - Message Authentication Code, Digital Signature: MD5, SHA1

## extra services by AXWAY product

- Business Protocols
  - EDIINT: AS1, AS2, AS3
  - S/MIME: Email client S/MIME, S/MIME over FTP/S, MQ Series, JMS
- Data Transport
  - FTP(S), JMS, MQ Series and file system
- Data Types
  - EDI (X12, EDIFACT, TRADACOMS)
  - XML (BizTalk, BOD, cXML, RosettaNet and others)
- Navigation
  - Routing
  - Proxies, Reverse Proxies, Firewalls
- Internal Integration Connections
  - JMS, File system, Web Service, FTP (scriptable and extensible, supports checkpoint-restart), MQ Series (WebSphere MQ)
- Security Models
  - RSA, VeriSign, Entrust, Baltimore certificates
  - Self-signed certificates
  - VeriSign XKMS and Entrust PKIX-CMP certificate lifecycle management

# Reliable Messaging

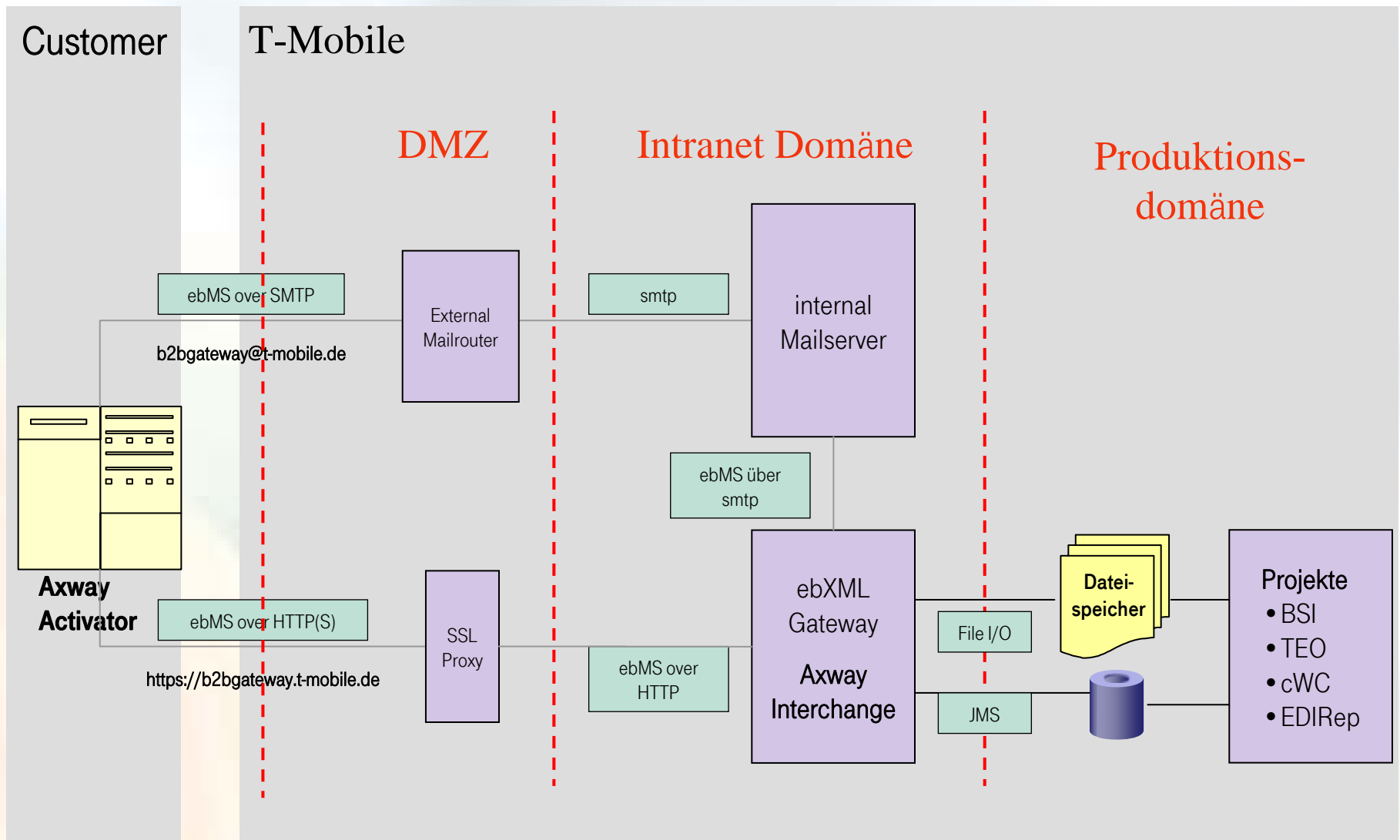
## ebXML- Standard

- **Message ordering**
- **Persistent Storage** of traded messages
- **Automated Acknowledgment Handling**
- **Duplicate Message Detection/Elimination**
- **Automated Retires** over defined Intervals
- **Persist Duration** and Time to Live
- **Resending** of Lost Messages and Acknowledgements

## extra services by Cyclone product

- **Message tracker**
  - Monitoring of traded messages
  - Searching and viewing of payloads and receipts
  - Resubmitting after Failures
- **Delivery Failure Notifications**
  - Generating, publishing and routing of defined events related to system activity
  - Event publishing in log files, the user interface, JMS queues and by e-mail

# Infrastruktur: ebXML Gateway



# Agenda

Short summary of T-Mobile's B2B Hub

- ebXML – What is it
- Delivery Process

..... **T** · Mobile ·

# Software Delivery

## Delivery of Client Software

- Axway Synchrony Endpoint Activator (current version 5.4  
incl. all supplier documentation)
- Licencies for 3rd Parties
- Customer Information Documentation
  - Step-by-Step Guide for the configuration of trading community  
(it does not substitute the Administration Guide from AXWAY)
  - Usage Requirements for
    - different protocol bindings (smtp/mail and http(s) )
    - backend integration (file I/O, JMS and useage of metadata)

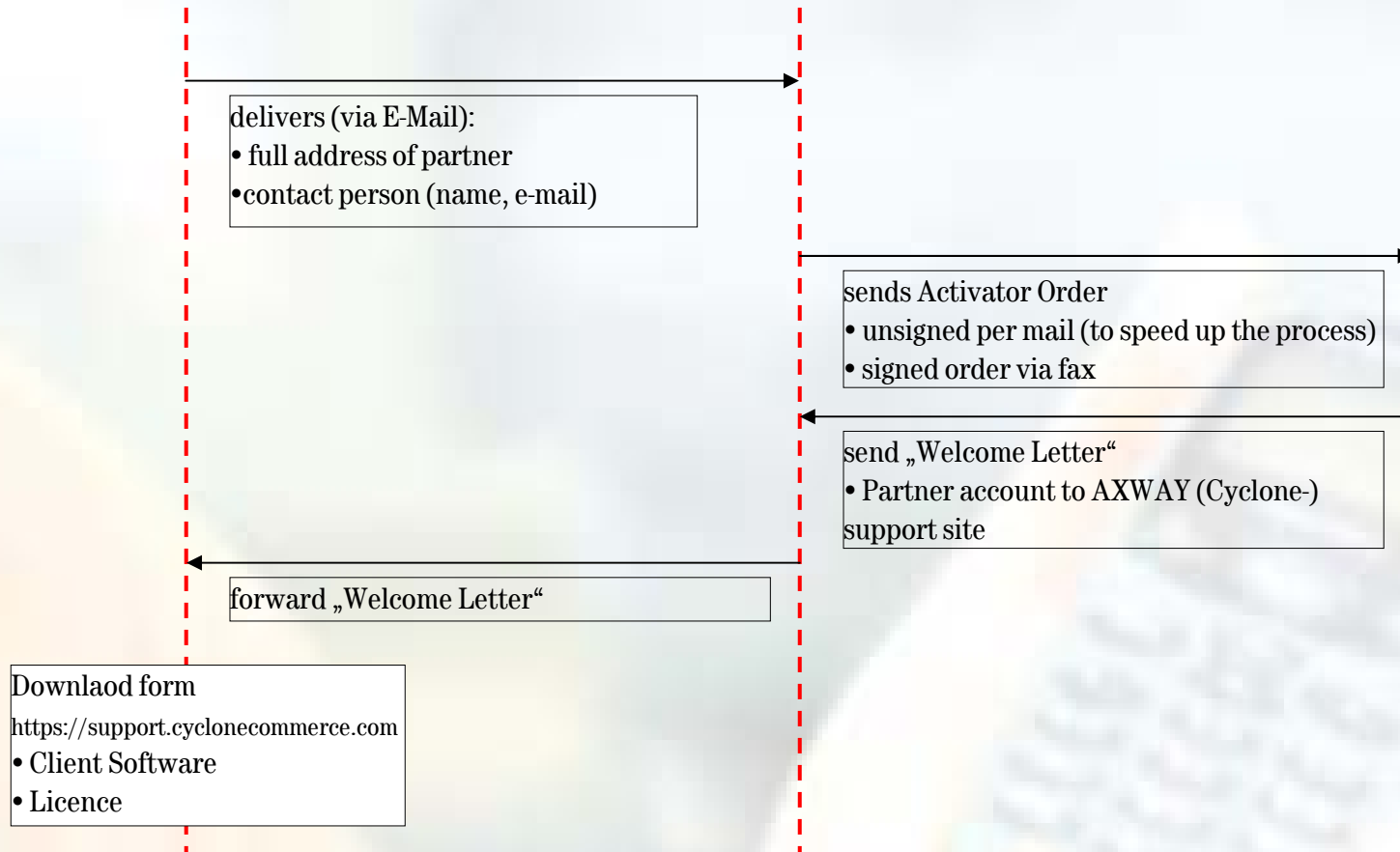


# Software Delivery Process

Partner

T-Mobile ebXML Team

AXWAY



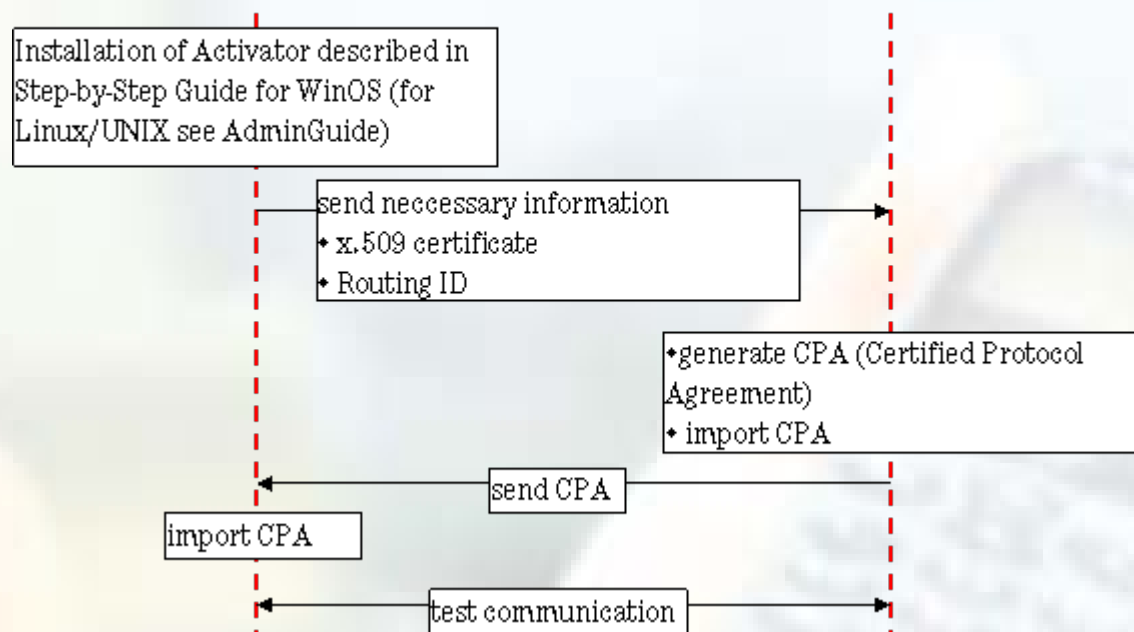
# Service Offering T-Mobile

## Support by ebXML Team

- Support while installing client software
- Setup of configuration files

### Wholesale Partner

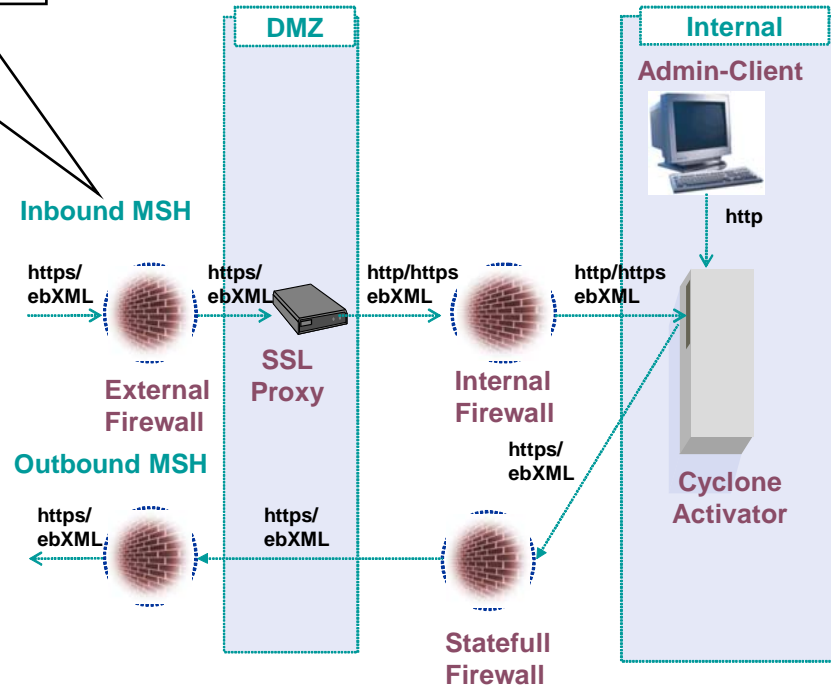
### T-Mobile ebXML Team



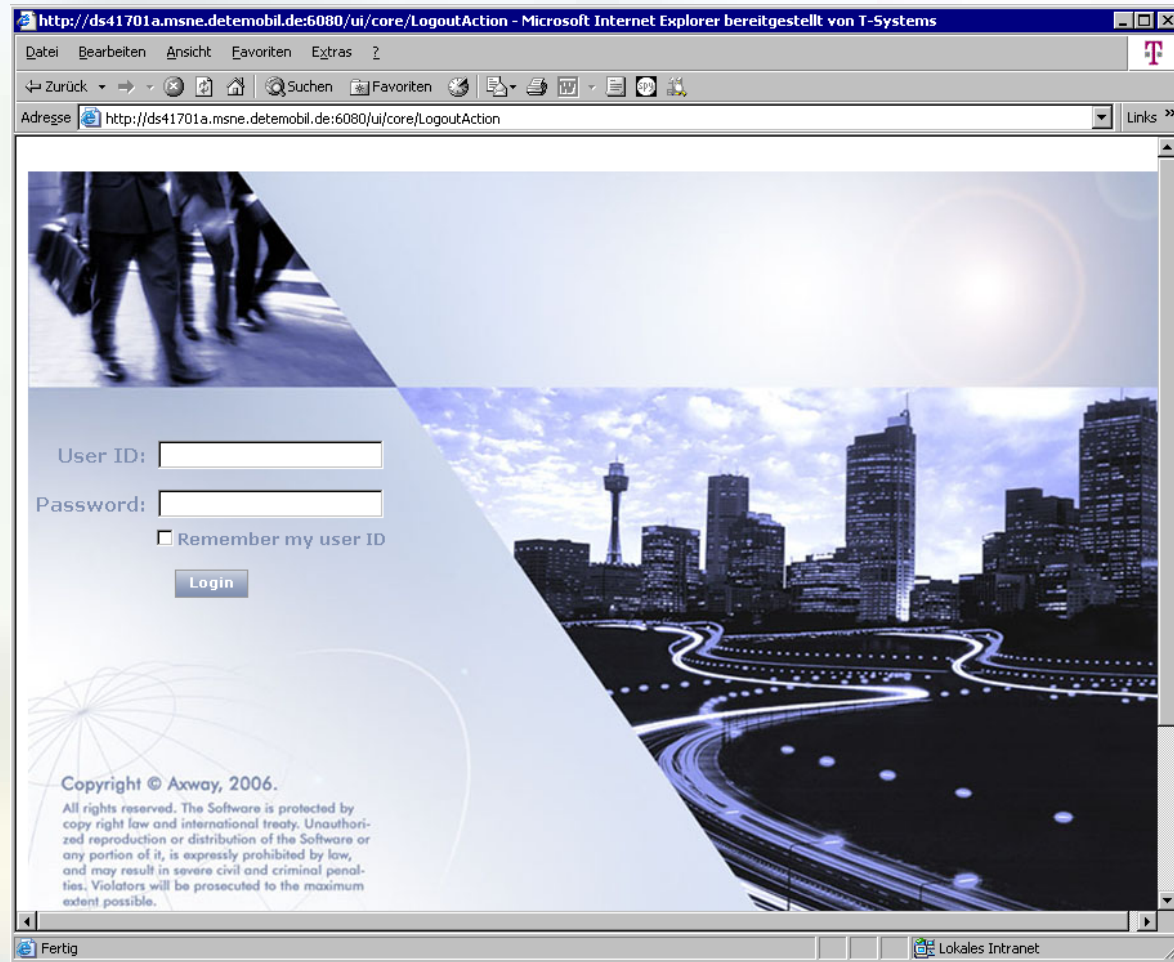
- Communication with Axway support
- Test and delivery of new software releases

# Possible Client Infrastructure (https binding)

Enabling access to the embedded HTTP(S) server of Client's EndPoint is the more critical task



# Many Thanks !!



..... **T** · Mobile ·